

This Week at First Presbyterian

Sunday, May 8 Mother's Day

- 9:00 a.m. Chancel Choir rehearsal-choir room
- 9:15 a.m. Presby KIDS! Activity Time (ages 6-12 yrs.)-Presby Place
Nursery care (ages 0-5 yrs.)-nursery
Adult/Youth Sunday school-library, chapel
- 10:10-10:25 a.m. Social time-Fisher Hall
- 10:30 a.m. Worship Service (children dismissed at 10:50 a.m.)
- 10:50-11:45 a.m. Children's Sunday school & choir-CE wing
- 11:30 a.m. Social Time-narthex

Monday, May 9

- 9:15-10:15 a.m. Yoga-youth activity room
- 12:00 p.m. Men's Group-Meadowlark Hills
- 5:30 p.m. Total Body Workout-Presby Place
- 5:30 p.m. Troop 74 meeting-Fisher Hall

Tuesday, May 10

- 4:00 p.m. Bibles and Newspapers-Meadowlark Hills
- 6:00-6:45 p.m. Community Outreach Dinner-Presby Place

Wednesday, May 11

- 7:00-7:30 a.m. Brown Bag Lunch prep-Presby Place
- 7:30-8:15 a.m. Community Outreach Breakfast-Presby Place
- 9:15-10:15 a.m. Yoga-youth activity room (child care available-RSVP)
- 10:00 a.m. Illuminated Journaling Bible Study-chapel
- 5:30 p.m. Mid High Small Group-Fisher Hall
- 7:30 p.m. Senior High Small Group-The Loft

Thursday, May 12

- 8:45-11:15 a.m. Lil' Kids Morning Out-nursery

Friday, May 13

- 10:00 a.m.-12:00 p.m. Food Pantry-narthex
- 1:00-3:00 p.m. Food Pantry-narthex

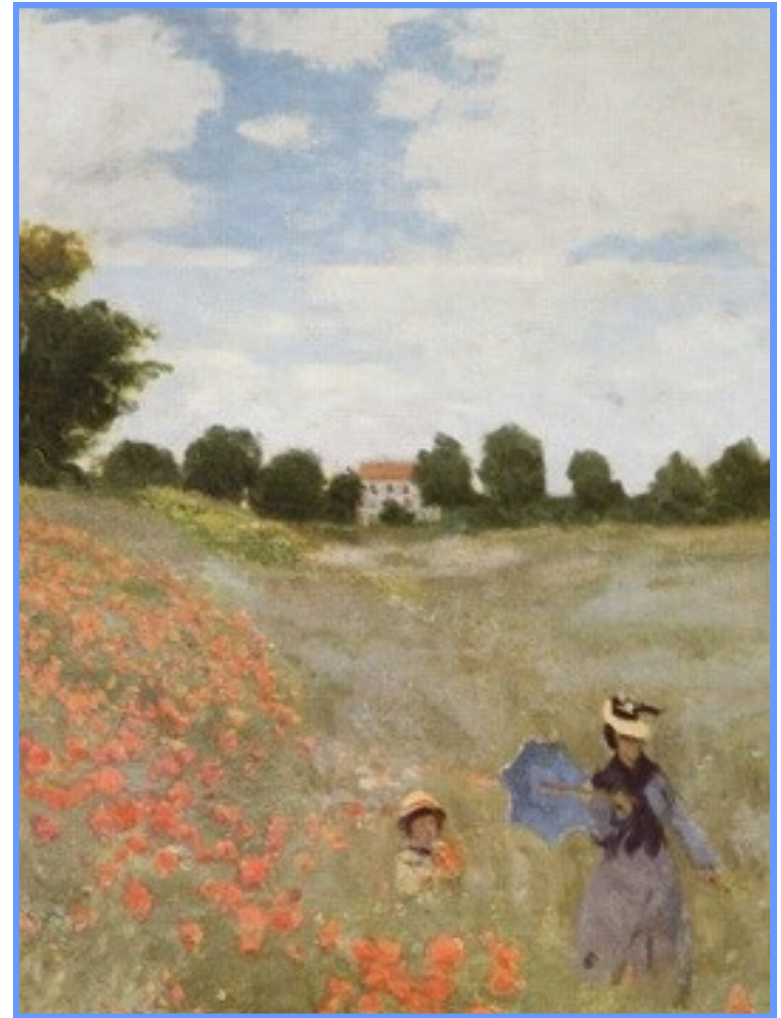
Saturday, May 14

- No activities scheduled at this time

Sunday, May 15 Pentecost and Sacrament of Holy Communion

- 9:00 a.m. Chancel Choir rehearsal-choir room
- 9:15 a.m. Presby KIDS! Activity Time (ages 6-12 yrs.)-Presby Place
Nursery care (ages 0-5 yrs.)-nursery
Adult/Youth Sunday school-library, chapel
- 10:10-10:25 a.m. Social time-Fisher Hall
- 10:30 a.m. Worship Service (children dismissed at 10:50 a.m.)
- 10:50-11:45 a.m. Children's Sunday school & choir-CE wing
- 6:00 p.m. Social Time for P2, Cornerstone-Presby Place
- 6:00 p.m. CORNERSTONE (7th-12th grades)
- 6:30 p.m. P2 (4th-6th grades)-youth activity room
- 6:30 p.m. Playback Theater-chapel

FIRST PRESBYTERIAN CHURCH



“...BUT A WOMAN WHO FEARS THE LORD WILL BE GREATLY
PRAISED. REWARD HER FOR ALL SHE HAS DONE.
PROVERBS 31:30-31

MANHATTAN KANSAS

MAY 8, 2016

WELCOME

Welcome Visitors

It is our privilege to welcome our guests every Sunday. May you find among us the warmth of Christian fellowship and the spirit of welcome. We encourage you to make this your church family for as long as you are here. Thank you for worshipping with us today.

SUNDAY SCHOOL SCHEDULE

ADULTS AND YOUTH

Covenant Class— Join the class for study & discussion of the Passion Narratives by Dr. Efrid of the Duke Divinity School. Meets in the chapel at 9:15 a.m. Led by Dean Ambrust.

"Painting the Stars" just completed, a new study will be announced. Meets at 9:15 a.m. in the library. Led by Steven Graham.

YOUTH Regular Sunday Schedule:

6:00 p.m. Open courts/hang out, all groups.
6:30 p.m. CORNERSTONE (7-12th grades).
6:30 p.m. P2 (4-6th grades).

Contact Youth Leader Erin Koolman or Associate Pastor Kati Collins for more information on events and volunteer opportunities.



MISSION STATEMENT

To create disciples for Jesus Christ and to practice His teachings by loving and serving God and one another.

CHILDREN

9:15-11:45 a.m.

"Mustard Seeds Nursery" Nursery 4 months-4 years. Lower Level, Children's Education Wing.

9:15-10:15 a.m.

Presby KIDS! Activity Hour-ages K-6th grade in Presby Place. Parents must check children in and out at Presby Place.

10:50-11:45 a.m.

Sunday school & choir. Children dismissed from worship following the children's sermon. **May 15 will be the final day of Sunday school until fall, the end of year party will be May 22nd.**

"The Grove" (Seedlings)

Pre-K. Lower Level, Children's Education Wing.

"The Way" Class (Frogs)

K-1st grade. Upper Level, Children's Education Wing.

"The Truth" Class (Owls)

2nd-3rd Grade. Upper Level, Children's Education Wing.

"The Life" Class (Trees)

4th-6th Grade. Upper Level, Children's Education Wing.

Social time is held every Sunday from 10:10-10:25 a.m. in **Fisher Hall** (lower level) and immediately following the 10:30 a.m. worship service in **the narthex lounge**. Delicious **Radina's** coffee is served.

Community Outreach Meals

Community Outreach Dinner

Tuesday, May 10

Main Dish: Jen Tindall

Main Dish: Mary Lawrence Currie

Main Dish: Kay Weigel

Main Dish: Doris Burnett

Side Dish/Bread: Cindy Olson

Dessert: Jeannie Davis*

Server: Brenda Thompson

Server: Cheryl McCollough

Server: Kay Weigel

Server: Chris Wenger

Server/Clean up: Jeannie Davis

*Team Leader

Contact: Claudia Voos 785-313-1874

Dinner hours 6:00-6:45 p.m.

Community Outreach Breakfast

Wednesday, May 11

Egg Bake: Rebecca Thomason

Egg Bake: Becky Klingler

Egg Bake: Peg Janssen

Serve: Matt Wilson

Serve: Scott Jensen*

Serve: Linda Schottler

Serve: Jim Schottler

Clean up: John Shimp

Clean up: Larry Bowers

Clean up: Carolyn Knostman-Bowers

*Team Leader

Contact: Missy Cox 785-341-4993

Breakfast hours 7:30-8:15 a.m.



Brown Bag Lunches

May sandwich makers

May 11-Jackie Macdonald

May 18-Cheri Graham

May 25-Peggy Lyons

Contact: Peggy Lyons at 537-0537 or

lyonspeg@sbcglobal.net if you'd like to volunteer to be a sandwich maker or to make a donation.



Food Pantry

Friday, May 13th

10:00am-12:00pm

Jan Gibbs

Donna Davis

Katie Philp

Anneke van der Hoeven

Chris Butler

1:00-3:00pm

Bob Pulford

Carolyn Pulford

Lois Morrison

To volunteer, contact: Ray Coffey at 587-7731

rcoffey9@cox.net



Look for more information on First Presbyterian Church at:

www.firstpresmanhattan.com

www.facebook.com/firstpresmanhattan

or follow us on Twitter

Announcements and Upcoming Events

MARK YOUR CALENDARS!

May 22-Recognition of graduating high school students

June 26-Presby Art Show-start creating! Anyone may submit up to 5 pieces. Submission forms are now available in the church office.

Illuminated Journaling Bible Study: Have you been enjoying the peaceful meditation of coloring pages? Pastor Kati is leading a new 9 week **Women's Bible Study** on **Wednesdays at 10:00 a.m.** The class will be working through Jann Gray's book "**Illuminated Journaling.**" Gray demonstrates and encourages painting, doodling, and illustrating in a Journaling Bible as a spiritual discipline. Curious? Check out our local Christian Bookstore, talk to Pastor Kati, or google "illustrated faith."



The final session of **Total Body Workout** will be **Monday, May 9**. We will begin a **Zumba Class** with a certified instructor on **Monday, May 16**. This class will be on Mondays only from **5:30-6:30 p.m.** in Presby Place for the summer months. You may contact Tamera Garibay for more information at 236-0955. It's back, come and get your **Zumba** on!

SUMMER CAMPS—You may sign up for any of the Summer Camps on our website by going to www.firstpresmanhattan.com, then click on "children" and then "summer camps." If you wish to sign up for multiple camps, you will need to register one at a time, but you will only need one set of release forms.

Please contact the church office if you need assistance.



Sermon Notes

"The Creative Healing of Gratitude"

Order of Worship 9:15 a.m.

PRELUDE	<i>How Great Thou Art</i>	Stephen Kucera, Organist
RINGING OF THE BELL		
HANDBELL INTROIT	<i>Amazing Grace</i>	
*HYMN	#611 <i>Joyful, Joyful, We Adore Thee</i>	
*CALL TO WORSHIP AND CONFESSION	(Based on Proverb's description of a Warrior Wife)	bulletin page 4
*ASSURANCE OF PARDON AND TIME FOR GREETING		
ANNOUNCEMENTS		
MOMENT FOR SUMMER CAMPS		Tamera Garibay
ANTHEM	<i>People of God, Rejoice!</i>	by Allen Pote Erin Koolman, Choir Director Reginald Pittman, Handbell Director
OFFERING	<i>Just a Closer Walk With Thee</i>	
*OFFERING RESPONSE	#658 <i>God Is So Good</i>	
*PRAYER OF DEDICATION		
SCRIPTURE LESSON	Hebrews 11:1-4, 32-40	Joan Nelson
PASTORAL PRAYER. THE LORD'S PRAYER.		
SPECIAL MUSIC	<i>I Love All Graceful Things</i>	by Eric Thiman Morgan Higgins, Soloist
SCRIPTURE LESSON	Hebrews 11:36, 12:1-2	Joan Nelson
MOTHER'S DAY PRESENTATION		
SCRIPTURE LESSON	Genesis 4:1-16, 25-26	Rev. Kati Collins
SERMON	"The Creative Healing of Gratitude"	Rev. Kati Collins
*HYMN	#36 <i>For the Fruit of All Creation</i>	
*BENEDICTION		
POSTLUDE	<i>Blessed Assurance</i>	

*Asterisk denotes standing if you are able.

Order of Worship 10:30 a.m.

PRELUDE *How Great Thou Art* Stephen Kucera, Organist

RINGING OF THE BELL

HANDBELL INTROIT *Amazing Grace*

***PROCESSIONAL HYMN** #611 *Joyful, Joyful, We Adore Thee*

***CALL TO WORSHIP AND CONFESSION** (Based on Proverb's description of a Warrior Wife)
Minister: Who can find a virtuous and capable partner in this daily marathon we call life?

Congregation: By the grace and mercy of God, we have found one another, people we can trust who greatly enrich our lives, and bring us good, not harm all the days of our lives.

Minister: Who can be that virtuous and capable partner in this daily marathon we call life?

Congregation: Each day is a new challenge, we come looking for strength on our journeys, that we might cheer for our fellow runners in the race of life.

Minister: Let us turn to God in confession.

All: Perfect and All-knowing Partner in life, we give thanks for the ways You have encouraged us as a father, a mother, a partner and friend. We also give thanks for the times You have challenged us, rebuked us, corrected us and set us straight on our path. We get up before dawn and begin our work, and we still find ourselves spinning wool into the dark of night. Strengthen us to face our mountains, lead us by still waters, and bring us to rest in Your presence, that we might pause and give thanks for Your daily offerings of new life. Amen.

*ASSURANCE OF PARDON & TIME FOR GREETING

ANNOUNCEMENTS

CHILDREN'S CHOIRS *Great Big God* by Liz Bird
Susan Maxwell, Director

MOTHER'S DAY PRESENTATION

MOMENT FOR SUMMER CAMPS Tamera Garibay

SCRIPTURE LESSON Hebrews 11:1-4, 32-40 Mike Vick

OFFERING *Just a Closer Walk With Thee*

***OFFERING RESPONSE** #658 *God Is So Good*

*PRAYER OF DEDICATION

ANTHEM *People of God, Rejoice!* by Allen Pote
Erin Koolman, Choir Director
Reginald Pittman, Handbell Director

PASTORAL PRAYER. THE LORD'S PRAYER.

SCRIPTURE LESSON Hebrews 11:36, 12:1-2 Fred Wilson

SCRIPTURE LESSON Genesis 4:1-16, 25-26 Rev. Kati Collins

SERMON "The Creative Healing of Gratitude" Rev. Kati Collins

***RECESSIONAL HYMN** #36 *For the Fruit of All Creation*

***CHORAL BENEDICTION** *God Give Us Those Who Love Us*

*BENEDICTION

POSTLUDE *Blessed Assurance*

*Asterisk denotes standing if you are able.

Greeting at the south entrance for the 10:30 a.m. service are **Loren & Kyanna Reiswig**.

The ushers at the 9:15 a.m. service are: **Al Welch, Doug Tippin, Nancy Habluetzel and David West**. Ushering at the 10:30 a.m. service for the month of May are: **Mary Mertz, Jon & Sylvia Hollis, Carolyn Knostman-Bowers, Valerie McGhee, Bob & Sally Mullen, and Jim Neill**.

We have two lovely floral arrangements this morning. One is given by **Ray & Maxine Coffey** in loving memory of their son, **Kevin Coffey**. The other one is given by **Susan Schoneweis** in honor of her father, **David Schoneweis'** 85th birthday and in memory of her mother, **Bernice Schoneweis**, whose garden many of the flowers came from.

Personal hearing devices are available. Please inquire of an usher.

We encourage parents to take advantage of our staffed nursery and/or cry rooms for their children. Our balcony cry room is now equipped with both audio and visual equipment, so you won't miss any part of the service. We love and welcome all and wish to provide the best worship experience possible for everyone.

We respectfully ask that all electronic devices be silenced during worship services.

First Presbyterian Church of Manhattan
Rev. R.C. McConnell, Senior Pastor
Rev. Kati Collins, Designated Associate Pastor

801 Leavenworth Street
Manhattan, KS 66502
785-537-0518

Email: staff@firstpresmanhattan.com Website: www.firstpresmanhattan.com